

Tompkins County, New York

TOMPKINS CO., NY
The Cornell
Cooperative
Extension of
Tompkins Co.



Cradle to Career, a project of the Center for Transformative Action, and partners lead the Childhood Nutrition Collaborative, a community initiative that ensures food security in Tompkins County.

Goals

- Identify assets for and barriers to food security and review the current approaches being used to decrease food insecurity
- Embed the Childhood Nutrition Collaborative within other food systems initiatives to better inform change and influence sustainability
- Influence systems change that has the potential to increase food security for every young person pre-birth to age 24

Background

- ✓ Population size: 104,871
- ✓ Rates of food insecurity in Tompkins County are estimated to be 14%.
- ✓ The median income is below U.S. average, with 20% living in poverty.

Key Milestones from July - December 2020

35



individuals that attended community convenings or meetings related to access to foods that support healthy eating patterns

21



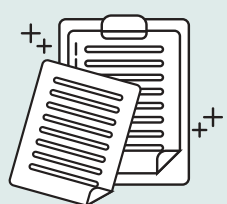
partner organizations convened or engaged by the lead partner to promote access to foods that support healthy eating patterns

14



community convenings or meetings related to access to foods that support healthy eating patterns

Success Stories



Distributed a community survey which included questions about food access and local food systems in an effort to gain better understanding of COVID's impact on the community

Created a Childhood Nutrition Collaborative Coordinator position, which holds outreach and relationship building central to this role



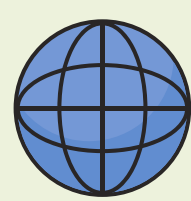
Updated food pantry lists and provided resource sheet on how to refer patients with food insecurity to food assistance programs

Follow their social media!

@TransformAction



@centerfor
transformativeaction



centerfor
transformativeaction.org

CRADLE TO
CAREER